

INSTRUCTION MANUAL

PLF



Note: Owner/Operator must read and understand this instruction manual before using the clamp.

General

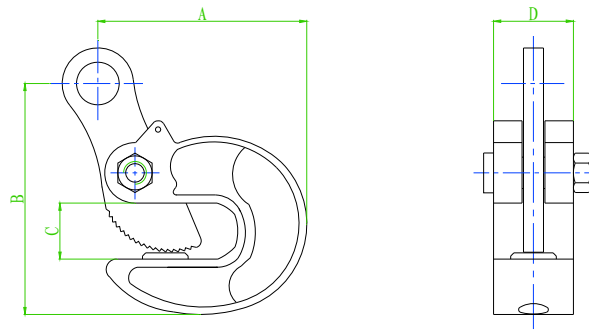
This manual contains important information for the correct installation, operation, and maintenance of the equipment described herein. The use of any clamp presents some risk of personal injury or property damage. All persons involved in such installation, operation and maintenance should be thoroughly familiar with the contents of this manual. To safeguard against the possibility of property damage or personal injury follow the recommendations and instructions of this manual and keep it for further reference.

Aside from transporting plate, this clamp is well-suited to turning over steel structures and welded constructions.

They are type-tested 4 to 1 against breakage. Each unit is proof-tested 2 times of the rated load.

Do not use the clamps in areas containing flammable vapors, liquids, gasses or combustible dust or fibres. Do not use the clamp in highly corrosive, abrasive, wet environments or in applications involving exposure to temperatures below -40°C or above 80°C

Specification



Model		PLF1	PLF2	PLF3
Rated capacity	t	1.0	2.0	3.0
Test load	KN	14.7	29.4	44.1
Jaw Opening	mm	0–15	0–20	0–30
Dimensions mm	A	0–17	0–22	0–32
	B	44	63	76
	C	128	167	202
	D	212	295	370
Net weight	kg	2.1	4.1	7.8

Installation

3.1 Estimate the plate that is to be lifted or moved and make sure it does not exceed the rated load of the clamp.

3.2 This clamp with pivoting shackle can be used for lifting and transporting plate at various angles, but the load capacity is reduced, as seen on the diagram below showing the load/force capacities

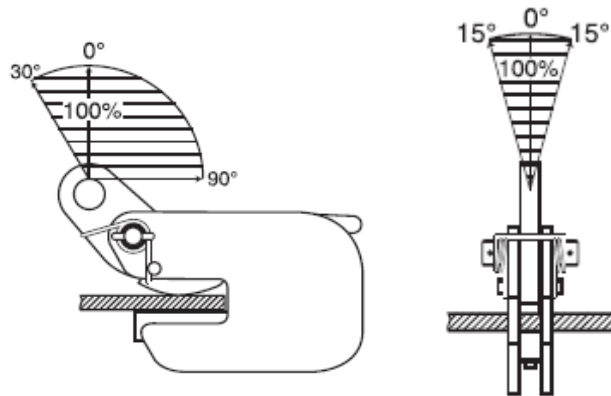


Diagram of force

3.3 When lifting clamps are used for horizontal transport of the clamps, one should observe that the lifting capacity for double leg chain swings is as follows.

Untill 60 degree = 100% of the WLL

Untill 90 degree = 75% of the WLL

Untill 120 degree = 50% of the WLL

3.4 Make sure that the plate surface must have a hardness below HRC 30/ Brinel1300.

3.5 Make a sure that the support to which the pivoting shackled is attached is strong enough to hold several times the weight of the plate.

IMPORTANT!YOU MUST USE IT FOR PAIRS

4.Operation

Warning

To avoid damage and/or personal injury:

- 1 .Do not exceed maximum load of the clamp.
2. Do not use the clamp to lift or transport people.
3. Do not use damaged clamp or clamp that is not working properly.
4. Do not lift or transport loads over people and make sure all personnel remain clear of supported plate.
5. Do not lift the plate that is not fully engaged with the clamping jaws.
6. Do not leave load supported by the clamp unattended unless specific precaution have been taken.
7. Do not lift loads that are not balanced, and the holding action is not secure.
8. Make sure of the condition of the load to be lifted.
9. Be sure to stay clear or the swinging range of objects being lifted .

4.1Place the clamps on the plate and exercise pressure, so that the innerside of the jaw rests against the plate.

4.2 Tension the cables or chains with the crane hook, while the innerside of the jaw rests against the plate.

4.3The load may now be lifted, paying careful heed to maintaining constant tension on the chains and/or cables.

4.4As soon as the load is at its destination let the

crane hook descend until the clamp is fully free of load ,meaning that the lifting chain is no longer taut.

4.5 The clamps may now be removed from the load.A crowbar may be used placed between the ridges of the body ,this allow the clamps to be simply truned away under the plate.

5. Maintenance/Inspection

To maintain continuous and satisfactory operation, a regular inspection procedure must be initiated so that worn or damaged parts can be replaced before they become unsafe.

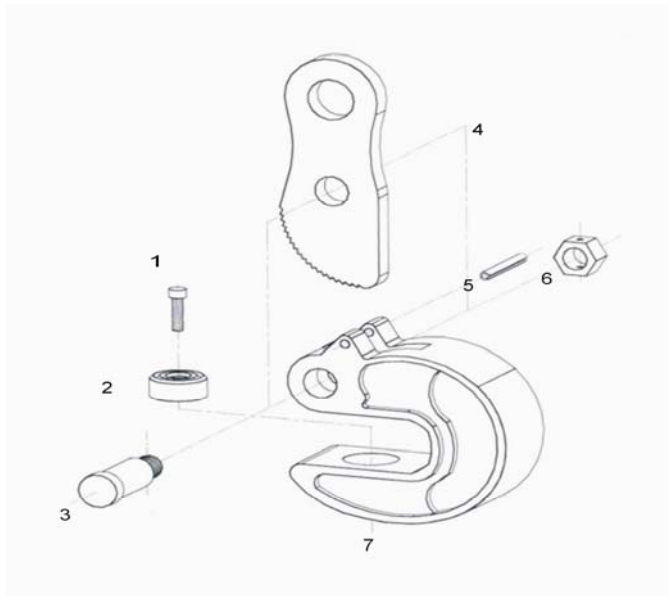
If faults are defected the clamp must be put out of service immediatly. The intervals of inspection must be determined by the individual application and are based up on the type of service to which the clamp is subjected.

The components of the clamp are to be inspected for damage, wear, corrosion or other irregularities. Repairs may only be carried out by a specialist workshop that uses original spare parts.

Manufacture Year:

Usable Lifespan: years

6.Parts List



Item	Description	Quantity
1	Screw	1
2	Round jaw	1
3	Jaw pin	1
4	Clamping jaw	1
5	Rollpin	1
6	Locknut	1
7	Body	1

